

# **International exchange in Ceramics between Japan, Korea, China**

Fumio Shimada

27th April, 2013

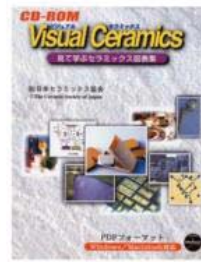
# The Ceramic Society of Japan (CerSJ)



# The Ceramic Society of Japan (CerSJ)



# The Ceramic Society of Japan (CerSJ) Publications





**Fumio Shimada, Porcelain work, 2010  
collection of the Modern Art Museum**



**Fumio Shimada, Porcelain Work, 2012**

# Contents

1. 3 main components of ceramics
2. History of Japanese Ceramics
3. Research Findings

# 3 Main Components of Ceramics

Firing 火

Clay 土

Decoration & Forming 細工

# Firing 火



# Firing 火



# Firing 火



# Firing 火



# Firing 火

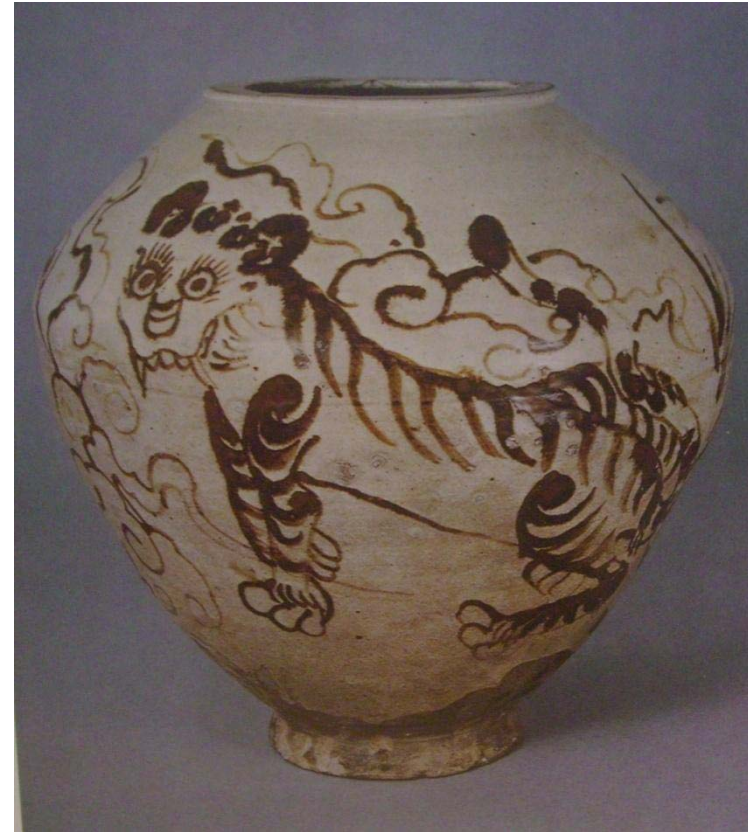


# Firing - Oxidation and Reduction Iron

Oxidation Iron glaze, China



Reduction Iron glaze, Korea



# Firing - Oxidation and Reduction Copper

Oxidation Copper glaze



Reduction copper glaze

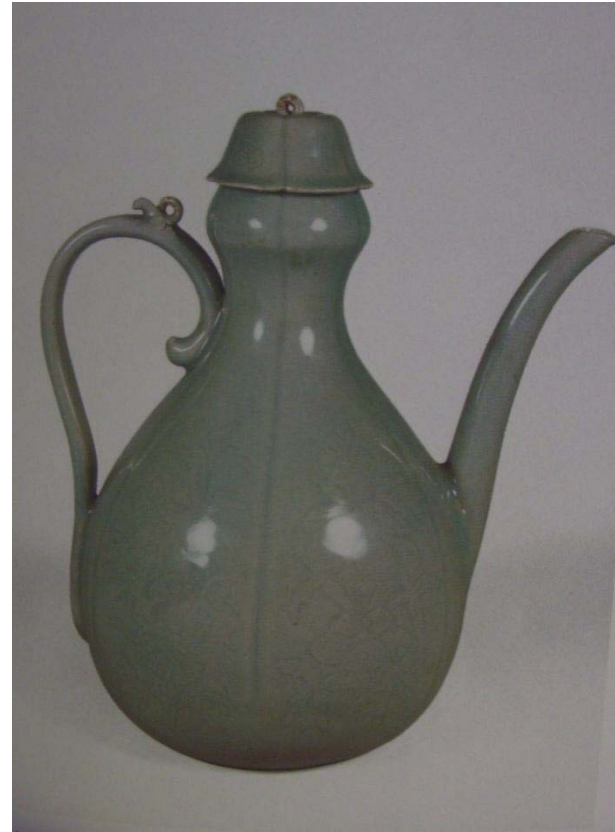


# Firing - Oxidation and Reduction Celadon

**Oxidation fire**



**Reduction Fire**



# Clay

By location



Karatsu wear, 17<sup>th</sup> Century  
繪唐津 松文輪花皿 17世紀



**Mashiko Wear, Syoji Hamada, 20<sup>th</sup> Century**  
**益子 浜田庄司 20世紀**



**Bizen ware, 17<sup>th</sup> Century. Triangular flower vase with strong curving**  
**備前 三角花生 17世紀**

# Clay Types

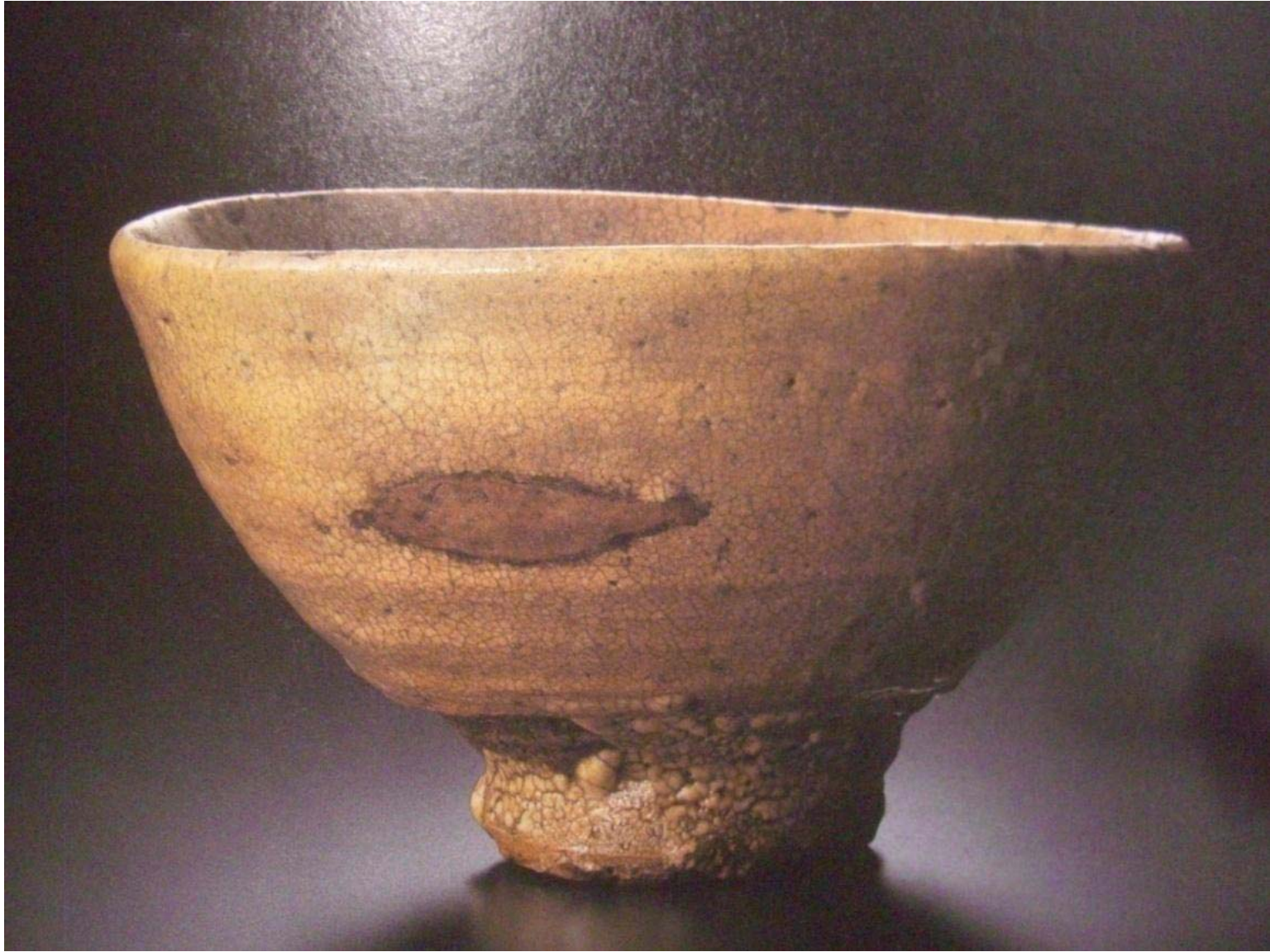
Earthenware, Ceramics,  
Stoneware and Porcelains



Earthenware - Clay mask 800BC  
土面 繩文晚期 BC800年頃



Earthenware - Jomon ware, B.C. 3000  
縄文中期



Ceramics - National Treasure, "Kizaemonn" Tea Bowl , 16<sup>th</sup> Century

国宝 大井戸茶碗 銘 喜左衛門 16世紀



Ceramics - National Treasure, "Unohanagaki" Shino Tea Bowl

国宝 志野茶碗 卵の花墙



Ceramics - Tree color Nara wear Covered Jar, 8<sup>th</sup> Century  
奈良三彩壺 8世紀

# Ceramics – Raku Firing, USA

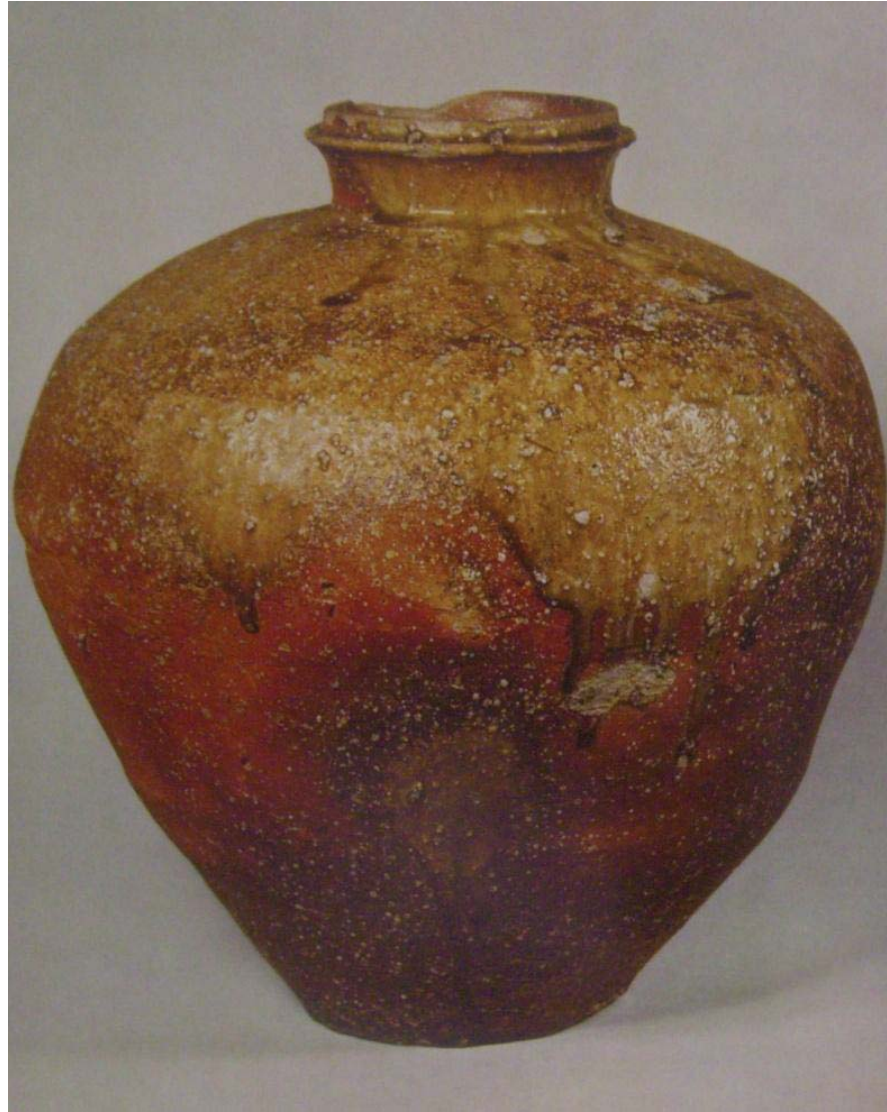




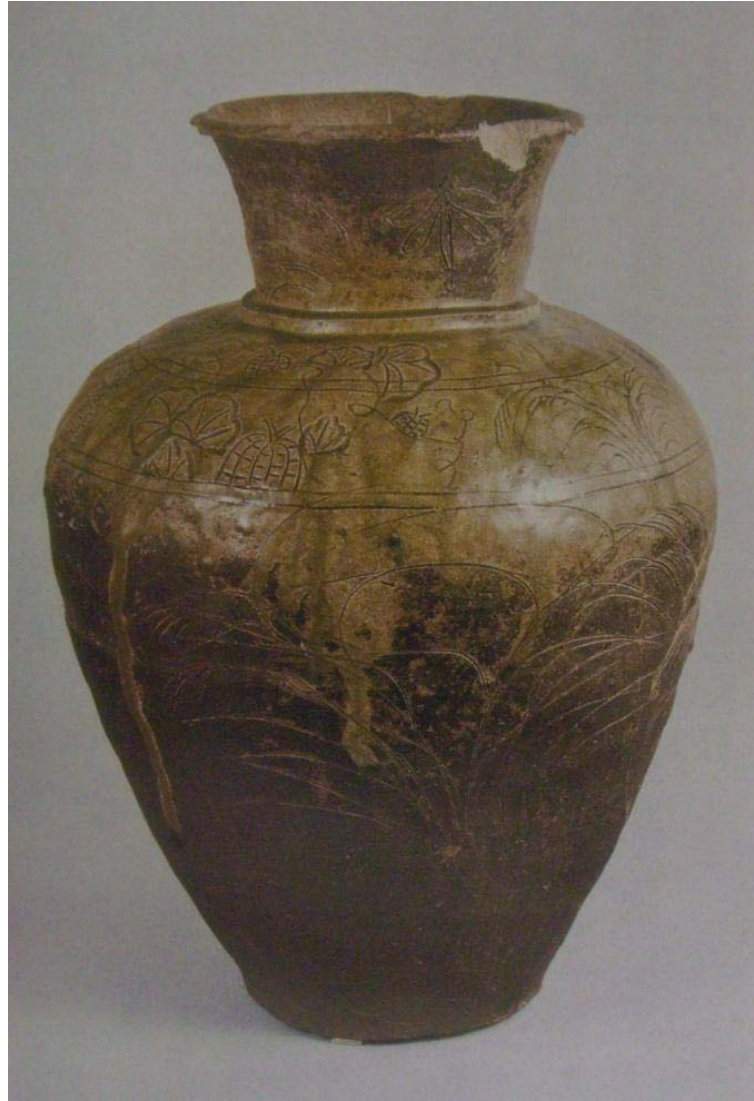
**Ceramics - Japanese Rakuwear,  
“Amagumo” Tea Bowl by Koetu Honnami, 17<sup>th</sup> Century  
樂焼 黒楽茶碗 銘雨雲 本阿弥光悦 17世紀**



**Stoneware - Tanbaware Bottle with Natural Wooden Ash Glaze**  
**丹波徳利 16世紀**



**Stone wear - Shigaraki wear**  
**Jar with small neck and globular body 14<sup>th</sup> Century**  
**信楽壺 焼締 14世紀**



**Stone ware - a Jar with averted neck decorated with grass, melons and dragonfly. National treasure**

**秋草文壺 国宝**



**Porcelain – A Bottle with ribbed body with floral design  
in under glaze blue, 17<sup>th</sup> Century  
伊万里染付花卉文德利 17世紀**



Dish with design of a lobster in overglaze enamels, 17<sup>th</sup> Century

古九谷 色絵海老文平鉢



**Porcelain – National Treasure,  
Kyo yaki by Ninnsei Nonomura 17<sup>th</sup> Century  
国宝 野々村仁清作 17世紀**

# Decoration and Production Techniques

細工



A Horse, 6<sup>th</sup> Century  
埴輪 馬 6世紀 手ひねり 野焼き 赤土



**Imari, Flower Vase, 17<sup>th</sup> Century**

**伊万里 柿右衛門様式色絵花鳥文瓢形花瓶 17世紀後半**



**National Treasure, White Raku Tea Bowl “Fujisan”, 17<sup>th</sup> Century**

**国宝 光悦 白楽茶碗 不二山 17世紀**

# **History of Japanese Ceramics**



**Jomon ware, Kaen Doki**



**Yayoi ware**



**Sue-ware**

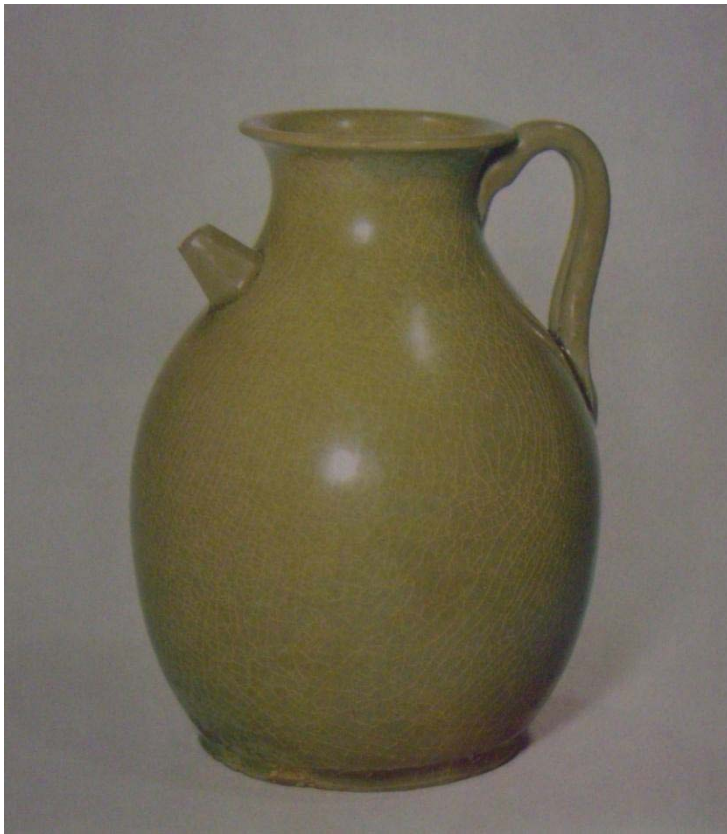


Three colored glazed ware, Bowl, 8<sup>th</sup> Century

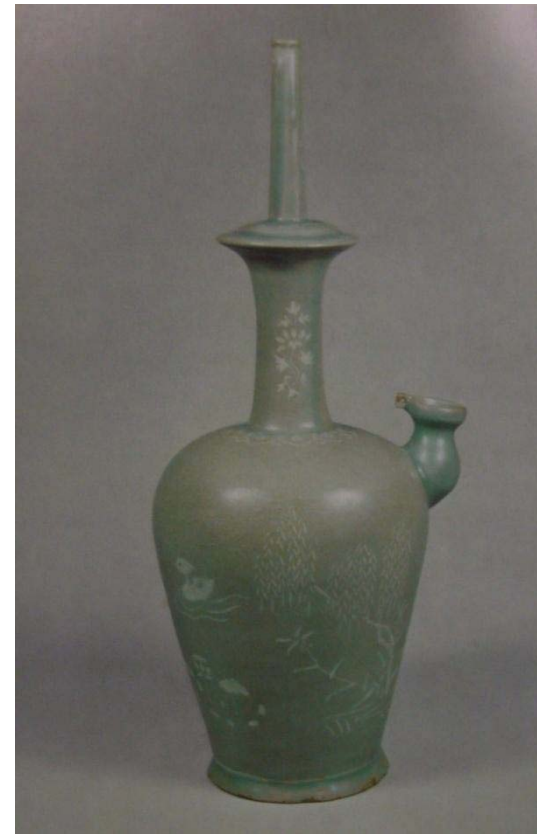
奈良三彩 鉢

# Dissemination of Celadon from China to Korea

**Celadon made in Yue Kiln**

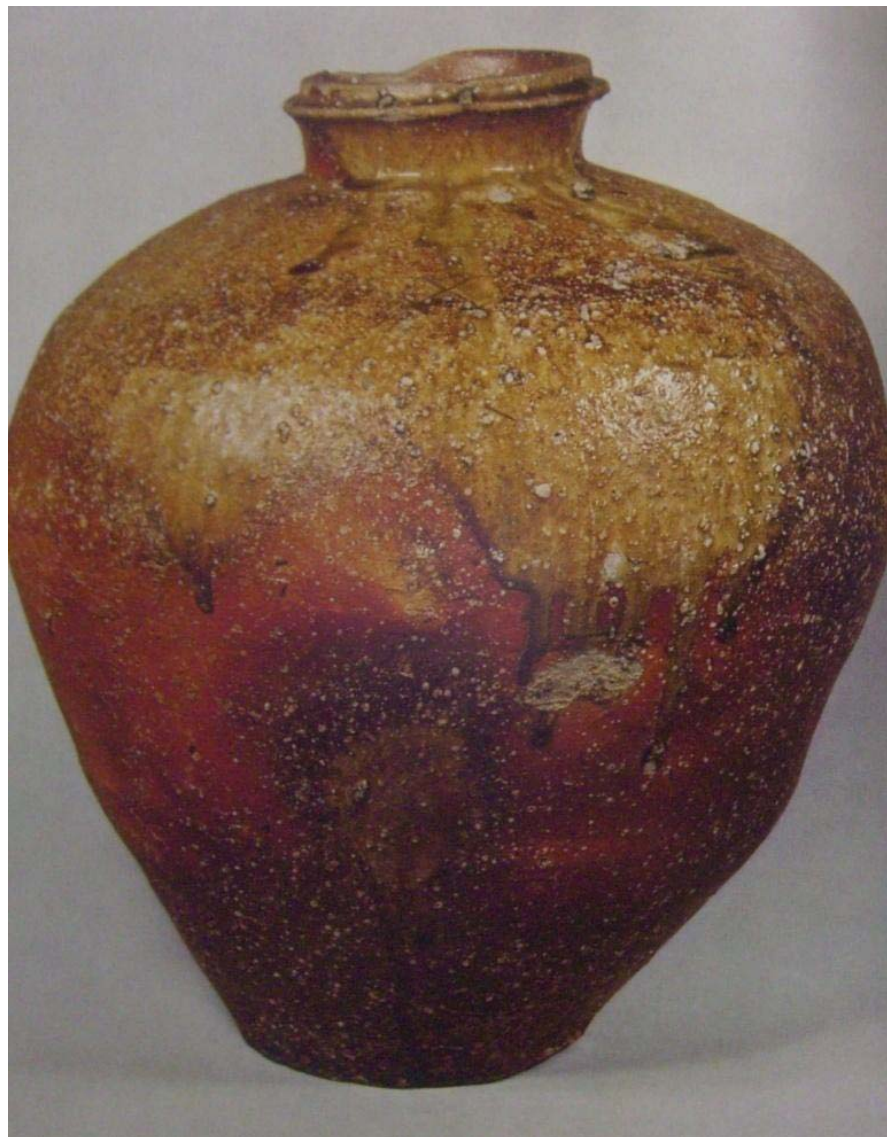


**Korean Celadon**





**Green Glaze Ceramic ware, Pitcher, Bowl and Dishes, 11<sup>th</sup> Century**  
**綠釉 手付水注 11世紀**



Tokoname, Large pot  
常滑 大壺



Shigaraki water jar owned by Sen-no Rikyu  
信楽 一重口水指 銘柴庵 利休所持



Seto ware, Sake Bottle, 1312

瀬戸灰釉瓶子一對 1312年ろくろ 穴窯 白土



**Late 16<sup>th</sup> Century – a turning point in the history of Japanese ceramics**



**Arita Blue and white, 17<sup>th</sup> Century**



**Satsuma-ware**

**Cylindrical shaped tea bowl. Chinese lion-dog design in enamel and gold**

**薩摩 色絵金彩唐獅子文茶碗**



Hagi ware, Tea bowl with feldspathic glaze  
萩茶碗



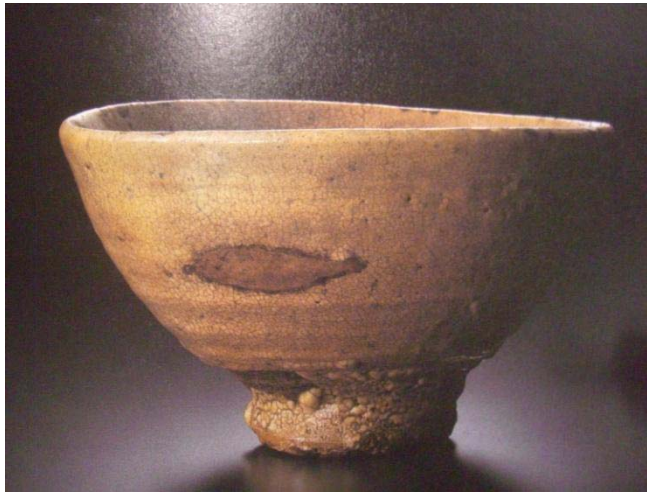
**Mashiko, Edo Period**



**Bottle of rhombi form shape designed grass by Kanjiro Kawai**

# Japan's National Treasures Ceramics

Korea



China



Japan





**Bowl stone ware with iridescent spotted black glaze**

**曜変天目茶碗**



**Yuteki Tenmoku Tea Bowl, 12<sup>th</sup> – 13<sup>th</sup> Century, China**  
**油滴天目茶碗**



**Raku ware, Tea Bowl named Fujisan, This is white raku teabowl created by the 17th century artist, Honami Koetsu in Kyoto. 不二山**



National treasure , “Kitazaemomn” Tea bowl made in Korea, 16<sup>th</sup> Century

大井戸茶碗 銘 喜左衛門

# Research Findings

# **Research on Lungquan Celadon Ware**

2004-2006

# Lungquan, China



# Lungquan Kiln Monument 大窯



# Former Lungquan Kiln Area 大窯





**Mallet shaped celadon vase with two handles in the shape of phoenix,  
13<sup>th</sup> Century, China**

**国宝 青磁鳳凰耳花生中国 南宋時代 13世紀**



**Seiji shimokabura hanaike - Turnip bottom celadon flower vase, China.**

**13th Century**

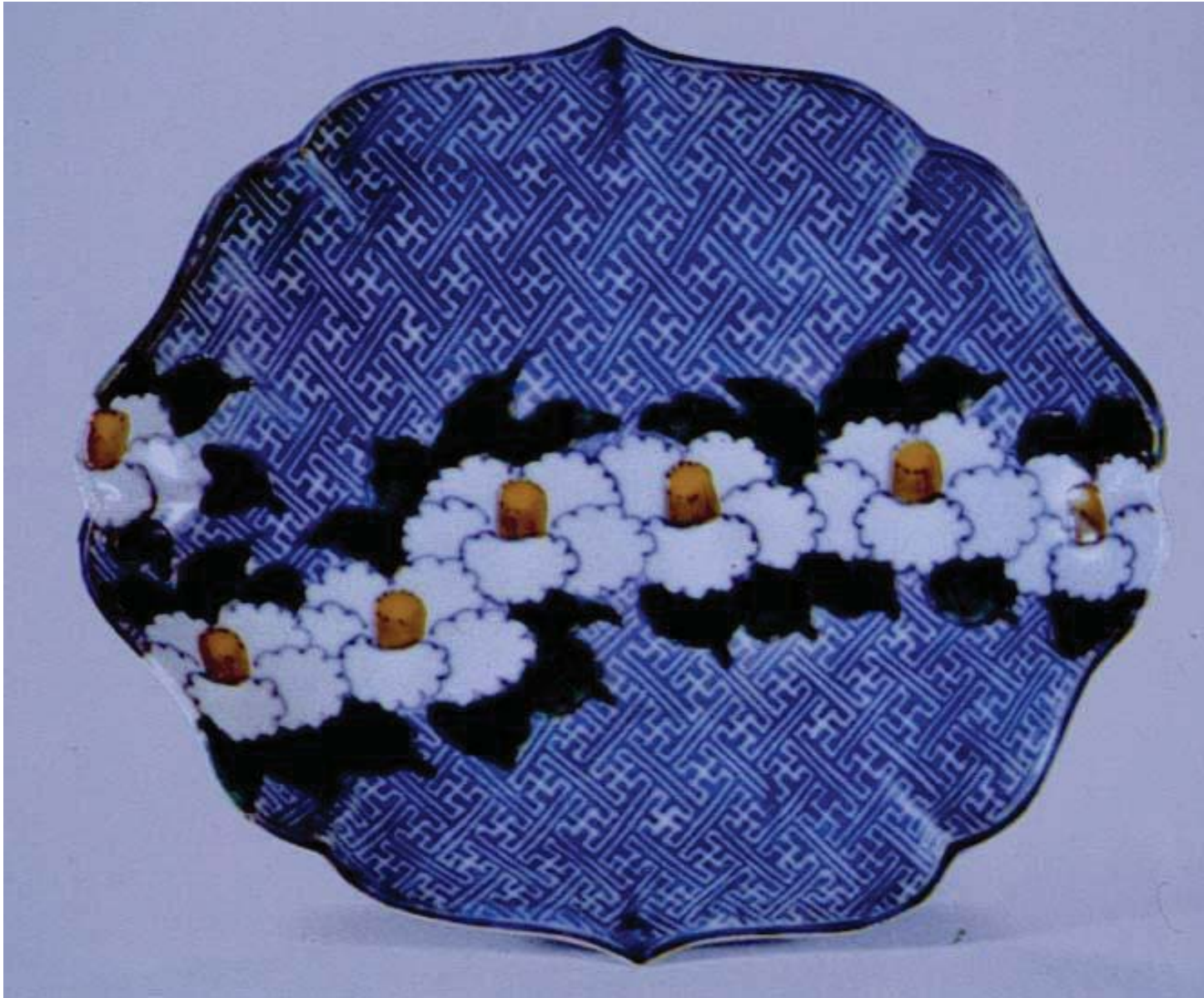
**青磁下燕花瓶 南宋時代 13世紀 龍泉窯**

**The history of the exchange of  
ceramic cultures between China  
and Japan seen through the  
under glaze ceramic decorations**

2010 -2012

## Liling Underglaze Painting





**“Sometsuke” (Blue and White) technique – Nabeshima yaki, Arita.**



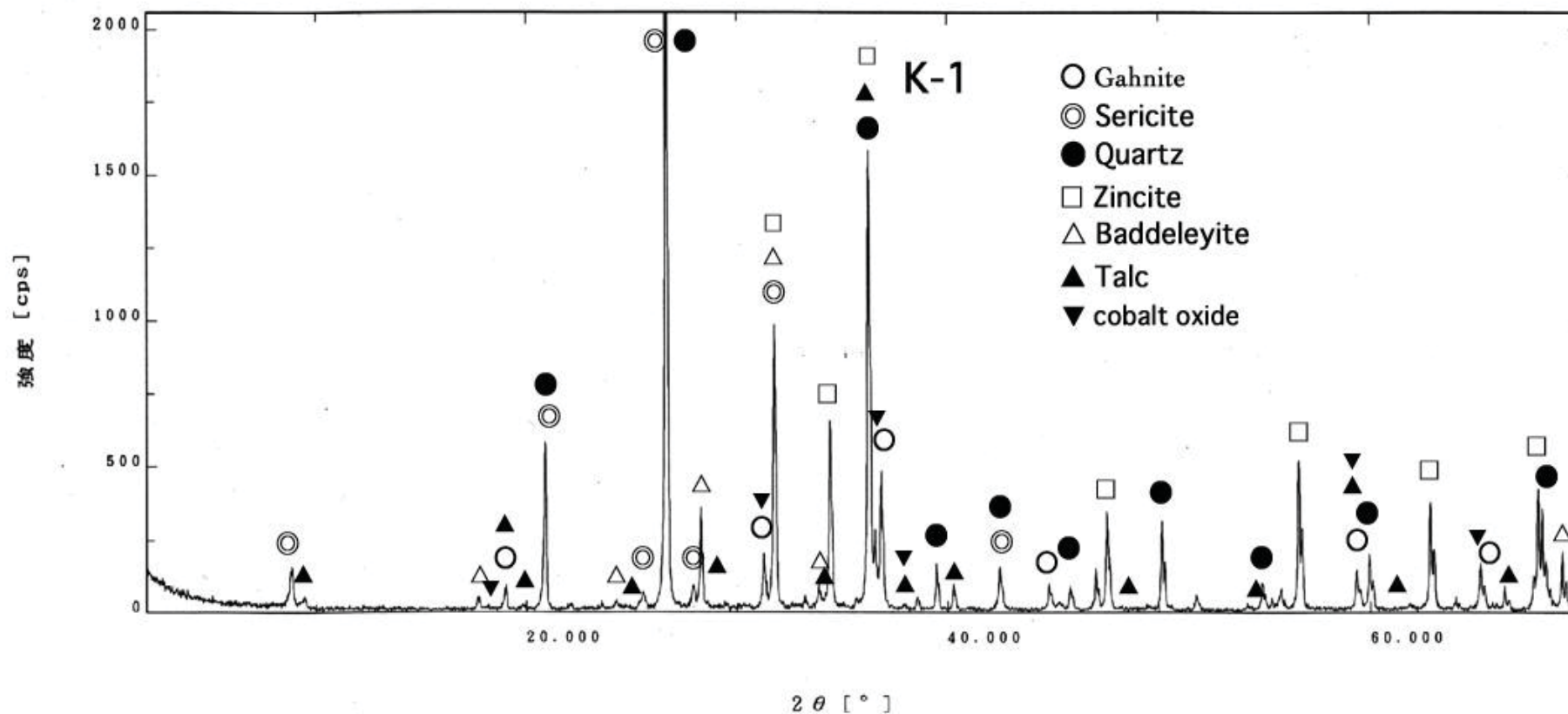
**“Sumi Hajiki” (Ink Resist) Technique, Liling, China. 20<sup>th</sup> Century**

# **Zaffer - the underglaze material used in Jingdezhen**

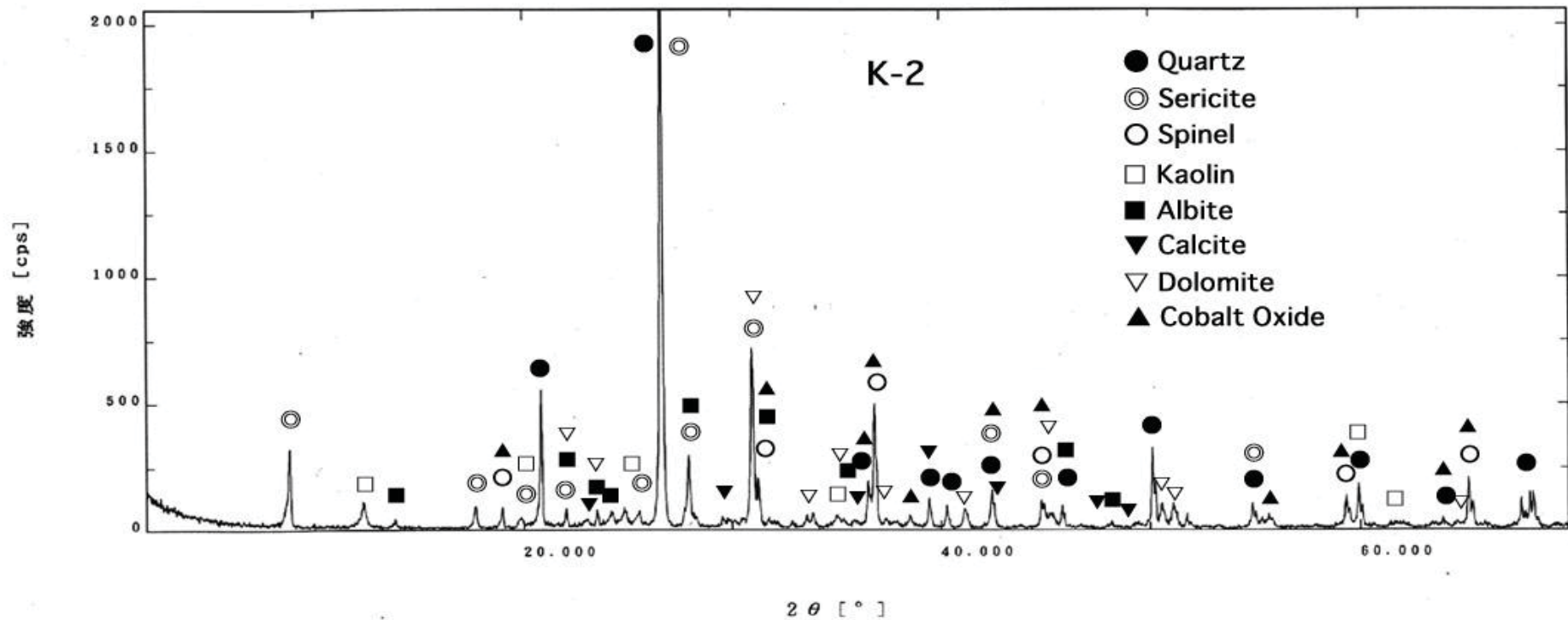
X-ray Pigment Test carried out at the  
Tokyo University of the Arts

# K-1 Emulated zaffer of the Yuan dynasty and Qing Dynasty

## 做元釉青花料

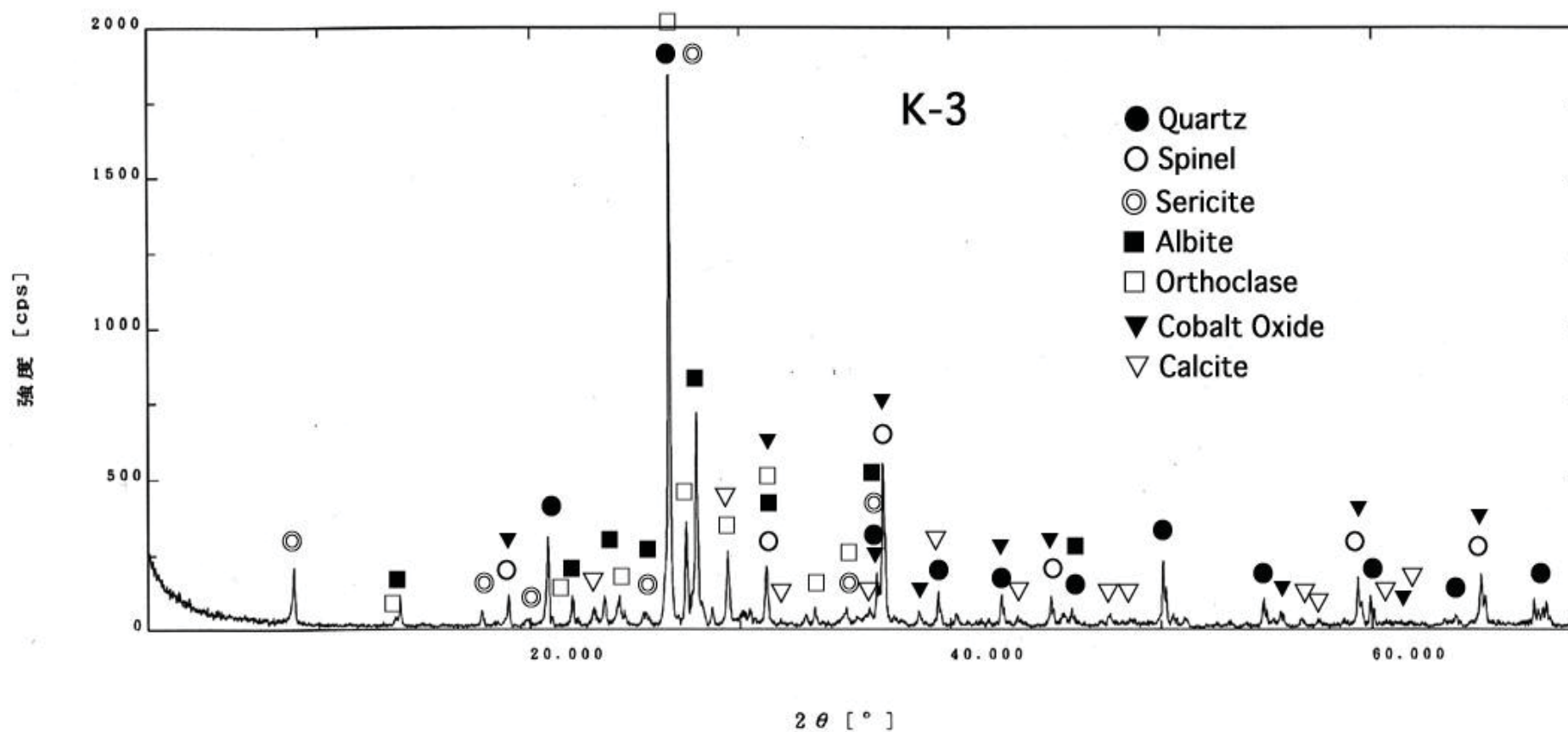


K-2 Blue and  
White  
青花料8号  
(経管苑園)

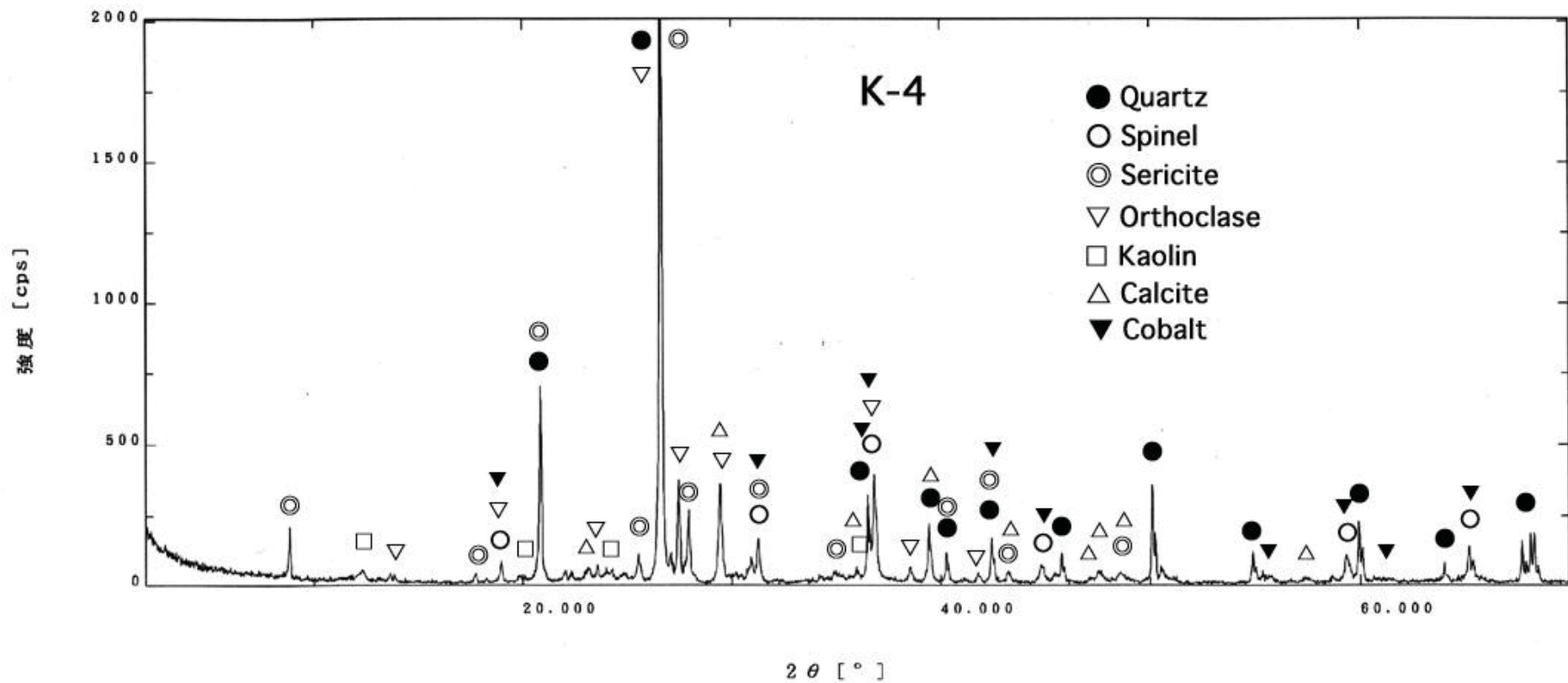


# K-3 Emulatd zaffer of the Qing Dynasty

做清朝  
(經管苑園)

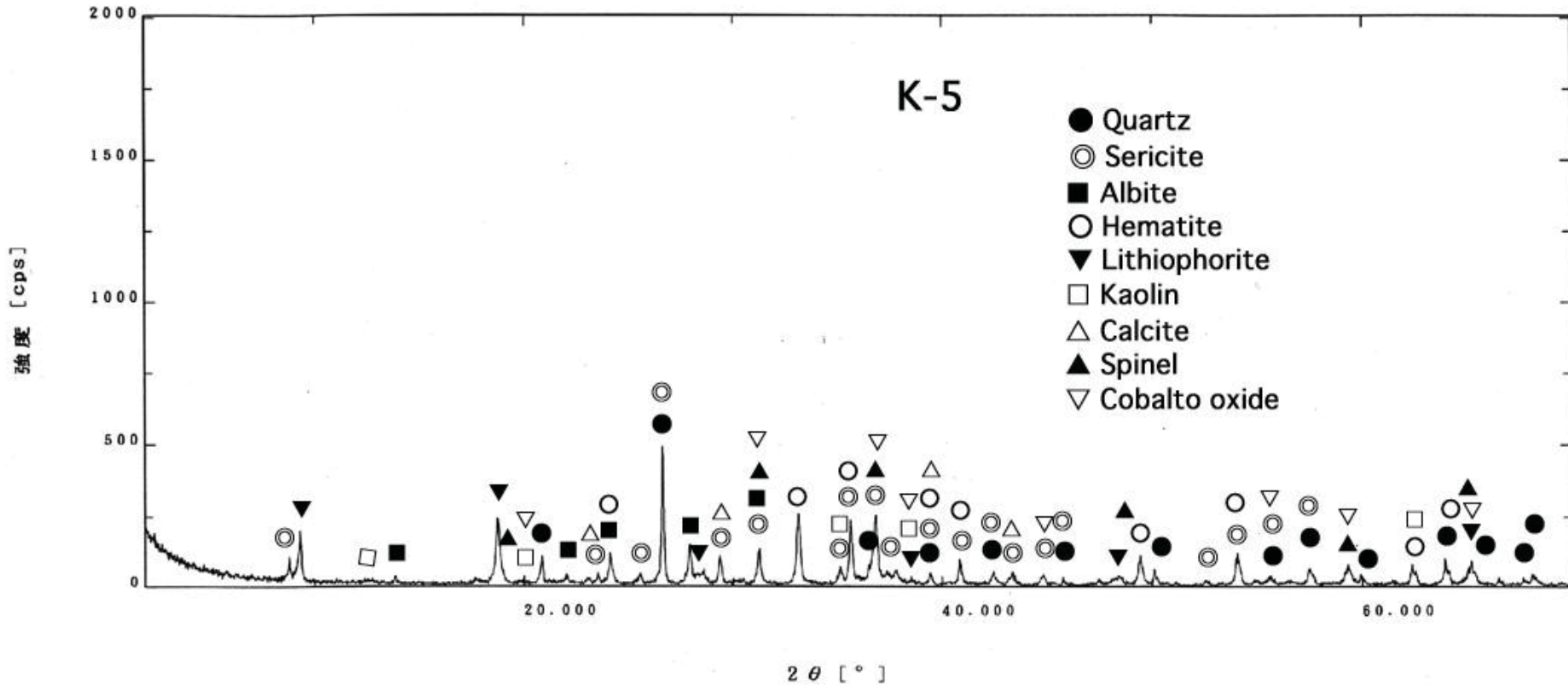


# K-4 Zaffer 青花料5号

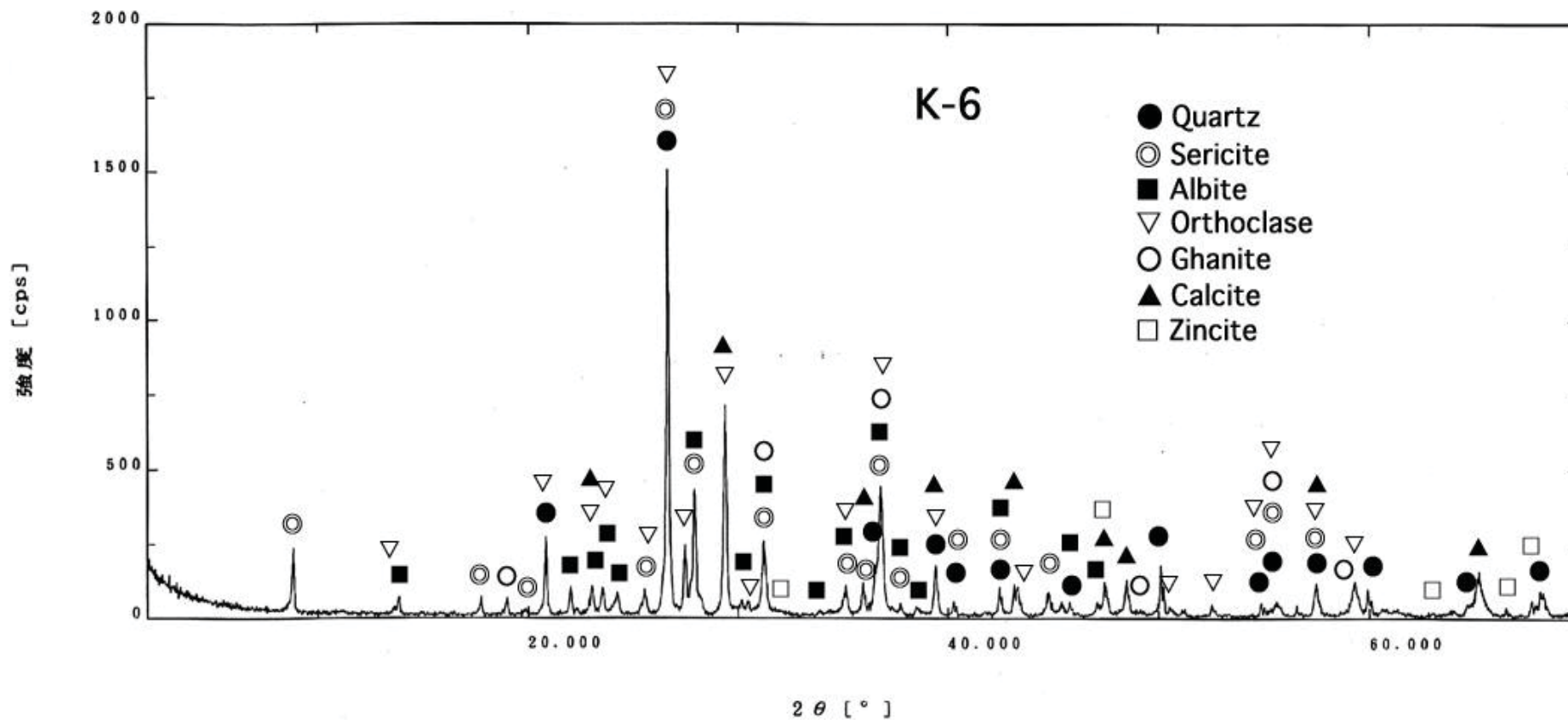


# K-5 Emulated Zaffer of the Yuan Dynasty

元青花料(43)  
小許顏色料



# K-6 Zaffer 青花料



# Coloring pigments of Liling

Triangle coordinates Test with the  
Tsuing Hua University of the Arts and  
Design research students

FUMIO 島田文雄素材

①736 孔雀蓝



②594 玛瑙

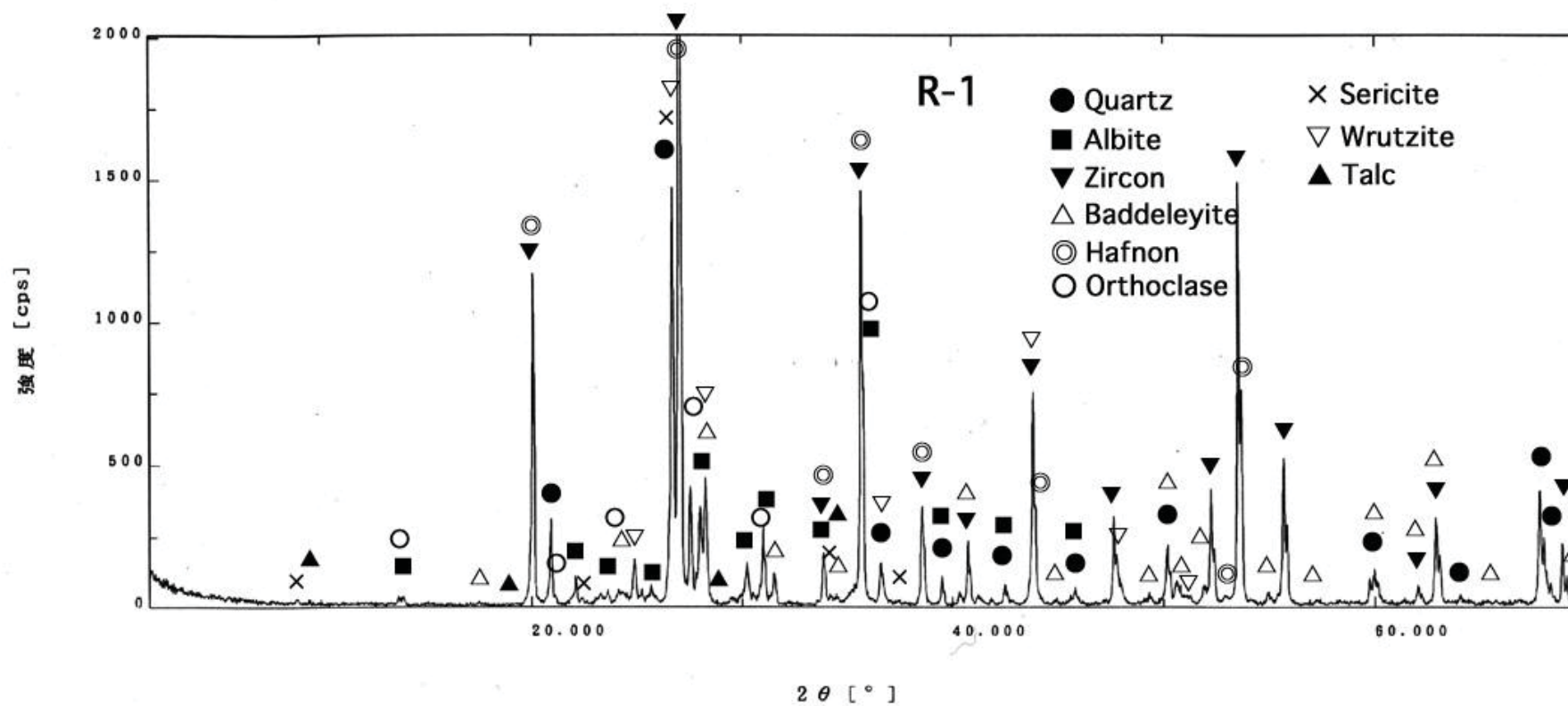
③1#青花蓝

Triangle Coordinates, Liling

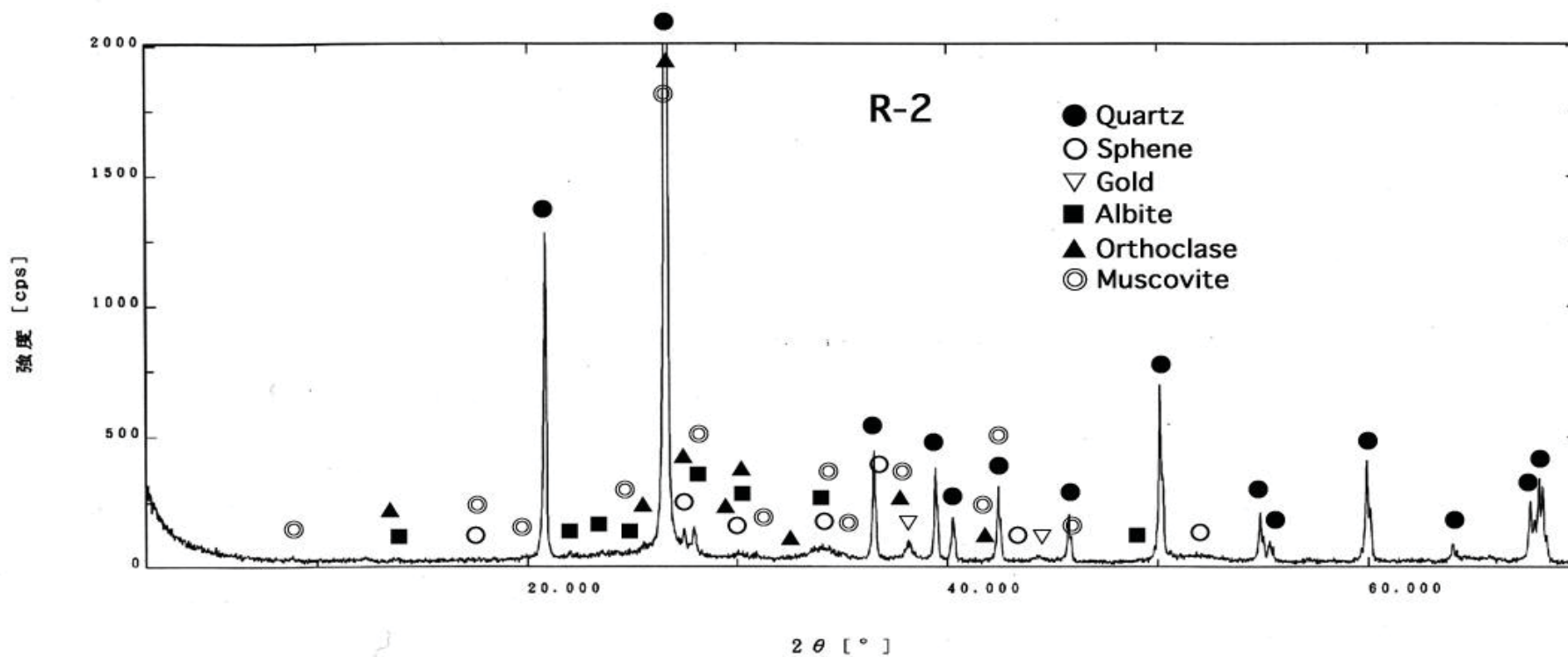
# **Coloring pigments of Liling**

X-ray Pigment Test carried out at the  
Tokyo University of the Arts

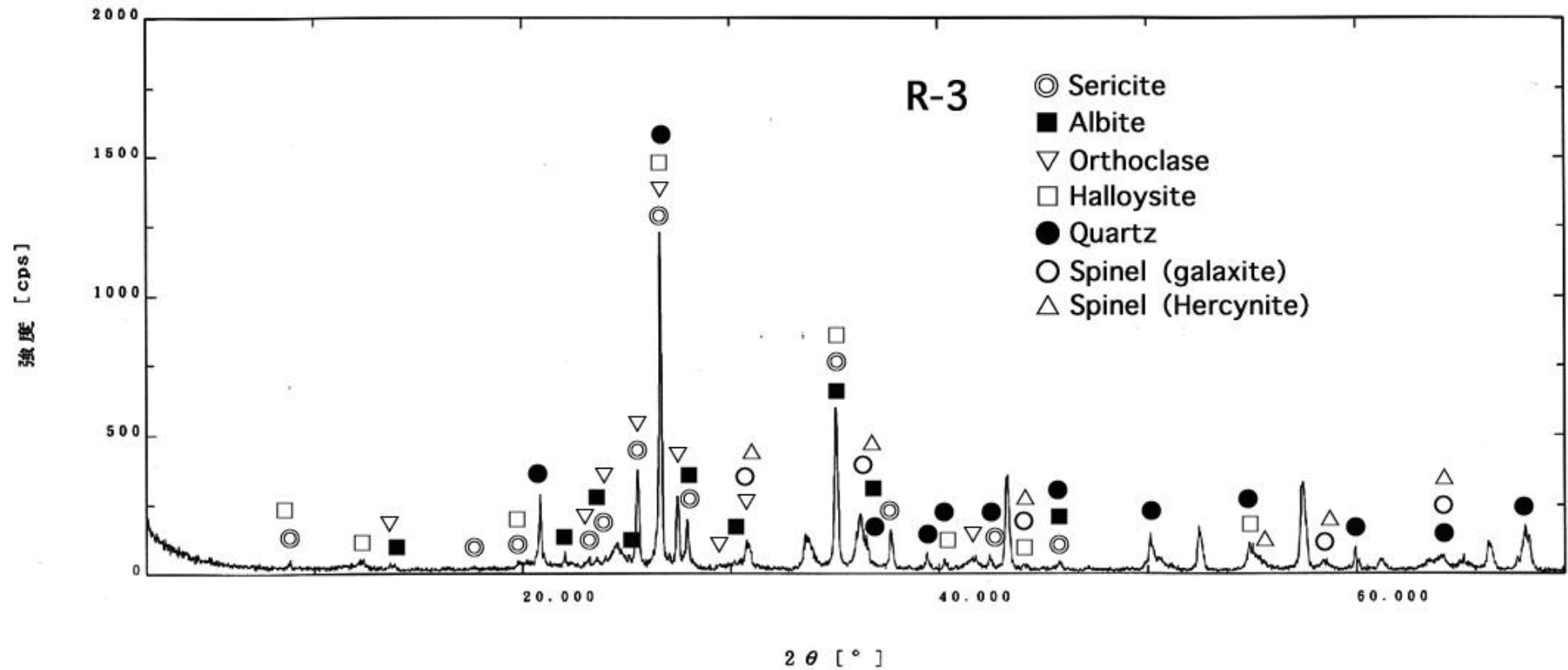
# R-1 Lemon Yellow Pigment 檸檬黄色



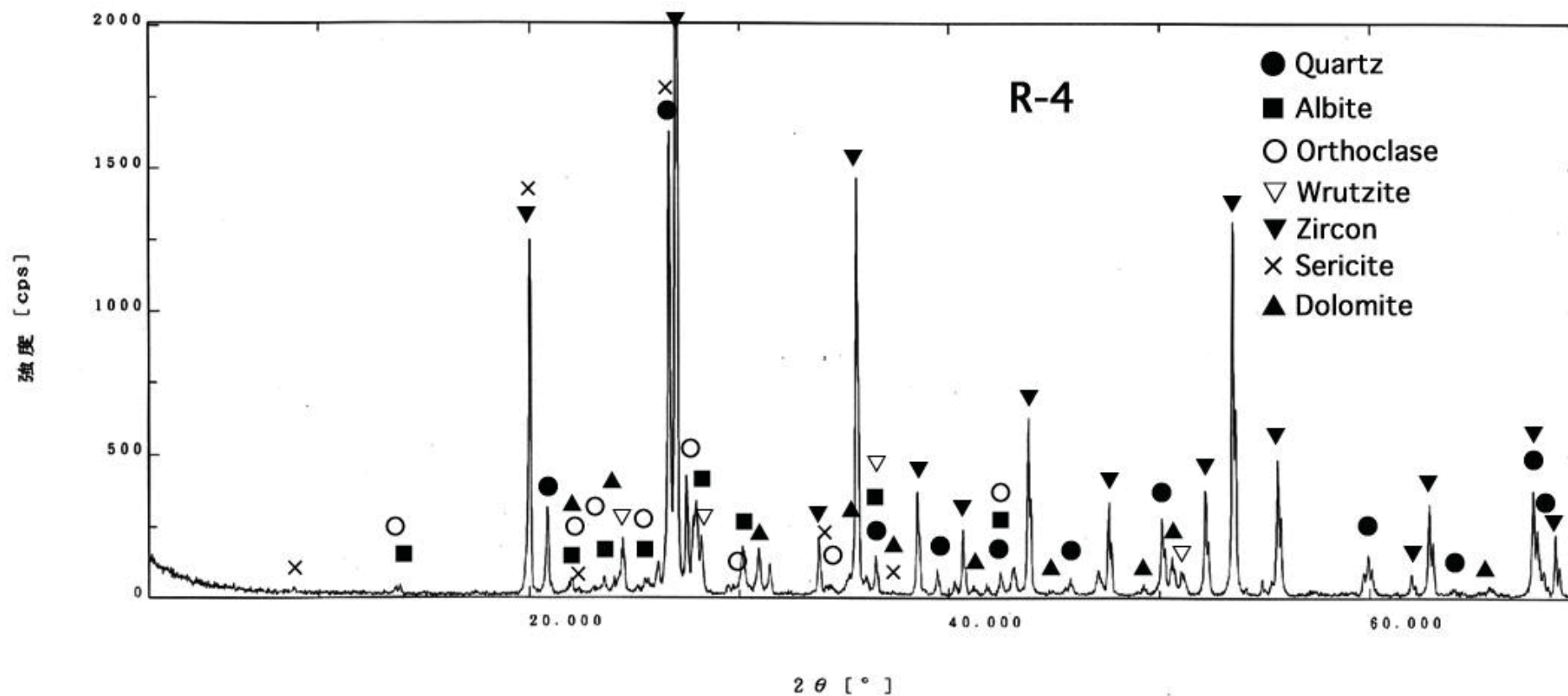
# R-2 Blue Pigment 青



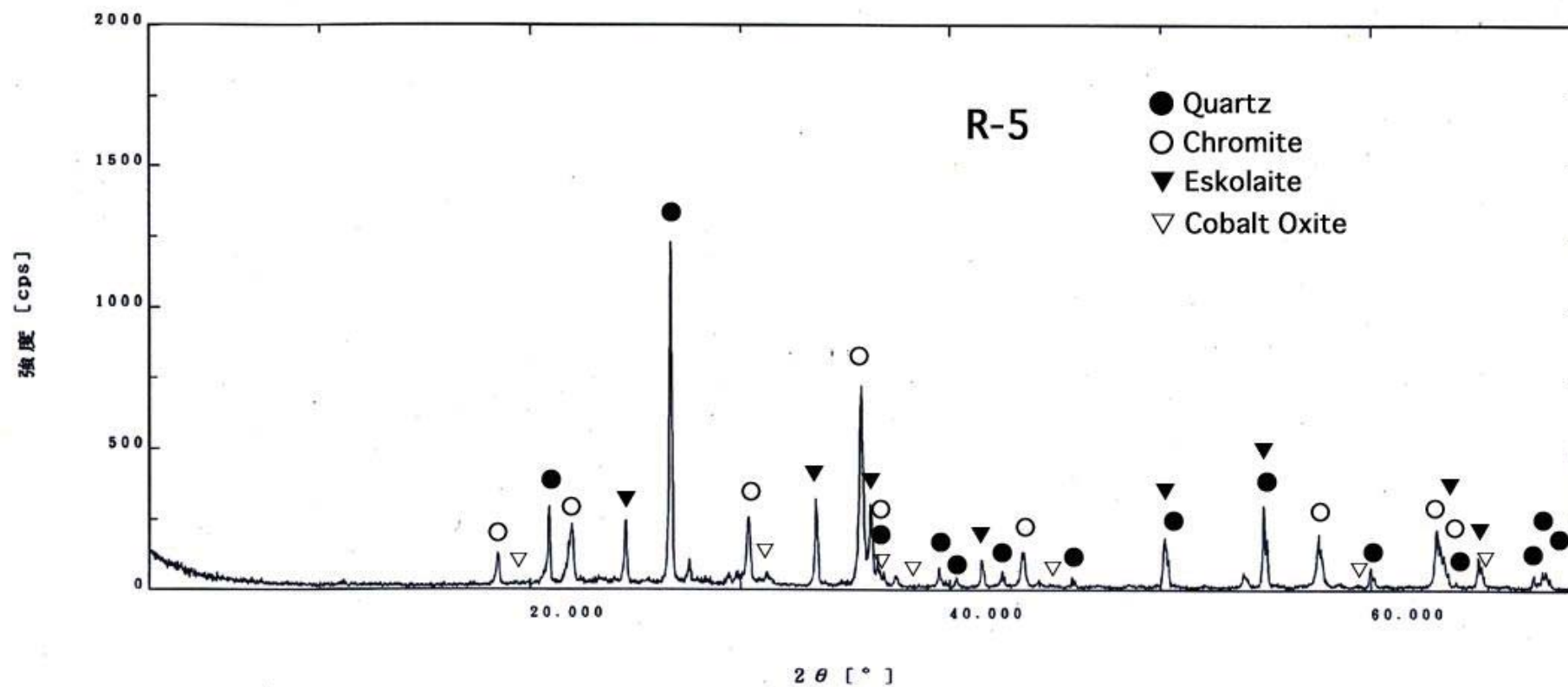
# R-3 Lemon Pigment 檸檬



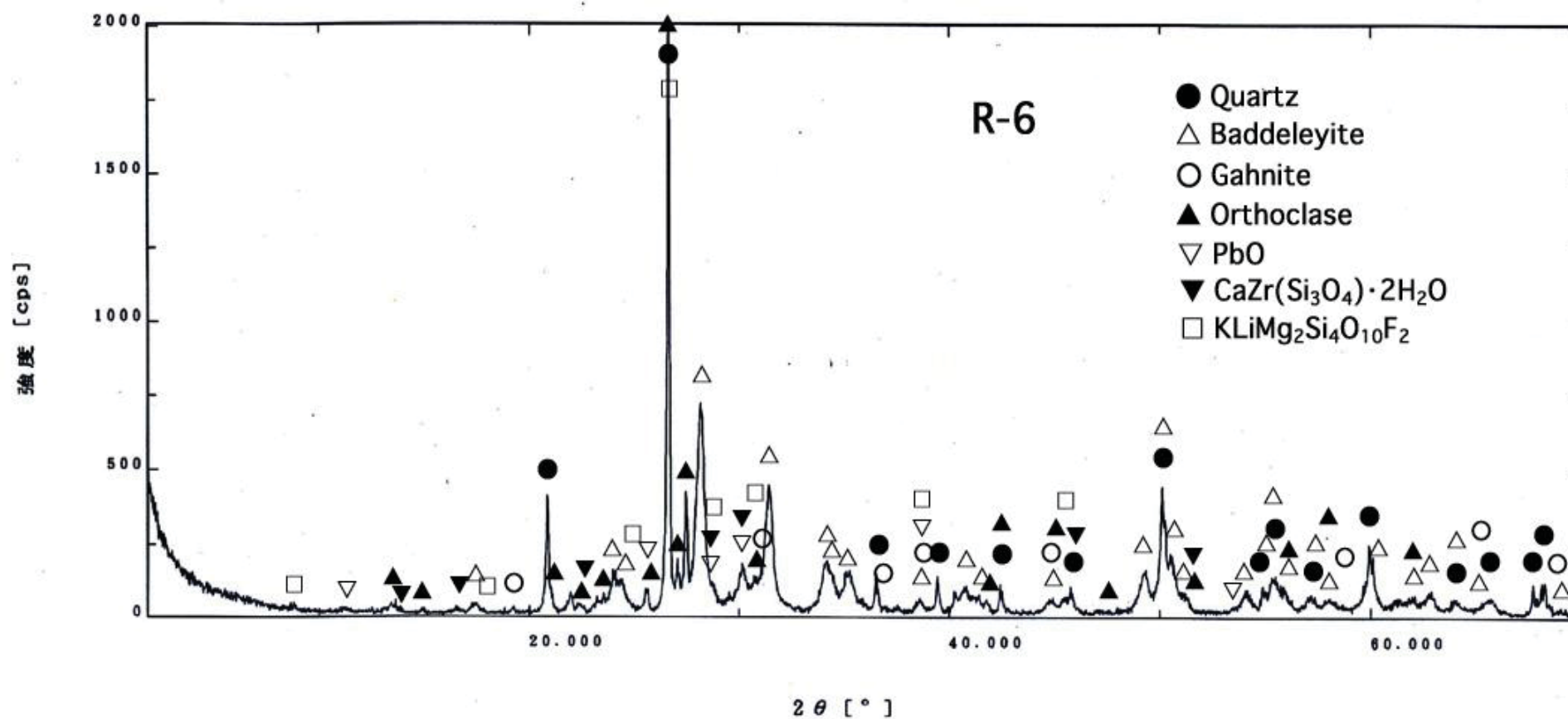
# R-4 Red Pigment 大紅



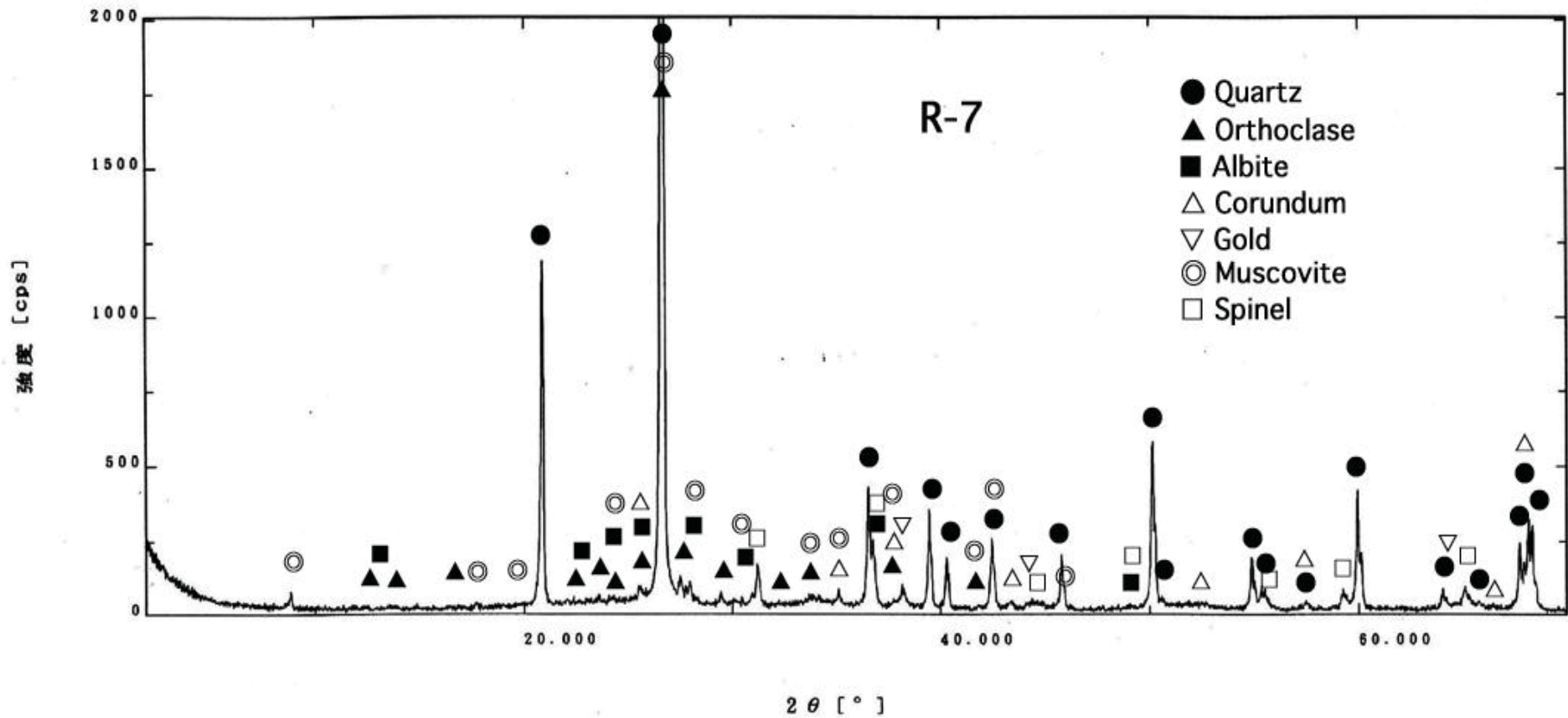
# R-5 Dark Green Pigment 黒緑



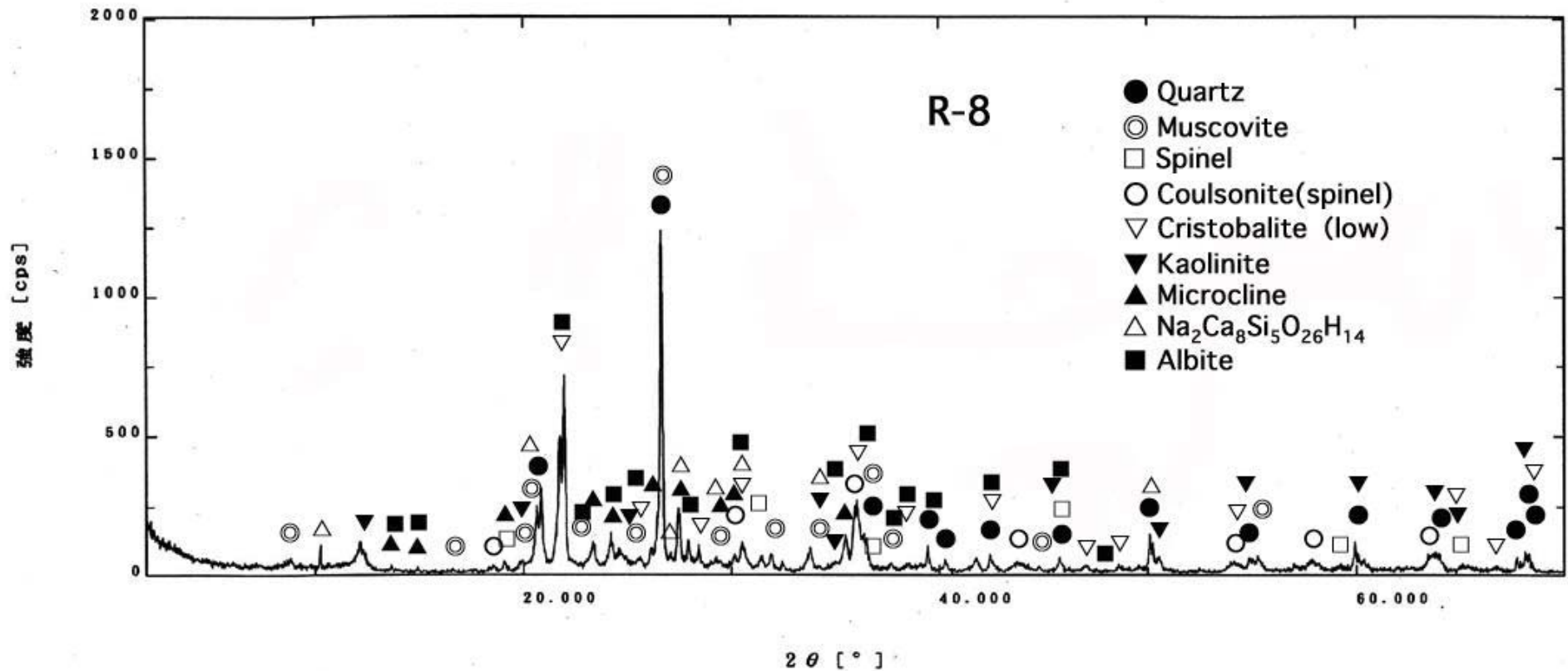
# R-6 White Pigment 白



# R-7 Purple Pigment 杯紫



# R-8 Black Pigment 黒



**Blue and White “Sometsuke”  
technique and delicate painting  
method of “Dami” technique**

# Ink Resist “Sumi-hajiki” technique

## Mixing Pure Tung oil



# Creating Ink Resist “Sumi-hajiki”



# Drawing with Ink Resist “Sumi-hajiki”



# Dami Technique



# Video



# Video



# Dami



# After Dami Painting



**After High firing  
Black sumi line turned white line**



# **My current research project**

**Thank you for your kind attention.**

